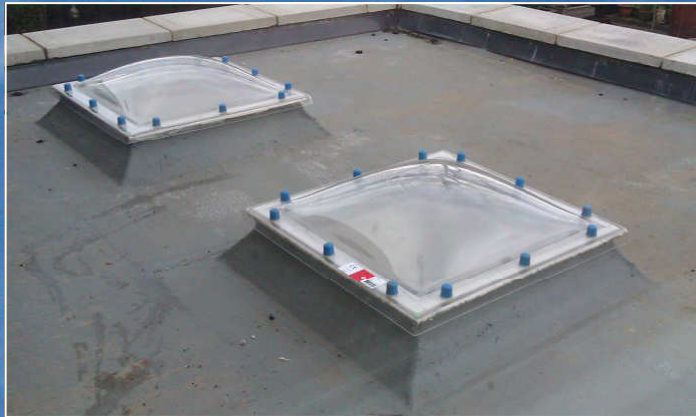


September 2013



## Outlook Polycarbonate Flat Roof Dome Rooflight

*'Natural Daylight supplied here'*



# Outlook Polycarbonate Flat Roof Dome Rooflight

Tel: 0114 4081000

Fax: 0114 2385511

## Outlook Polycarbonate Flat Roof Dome Rooflight

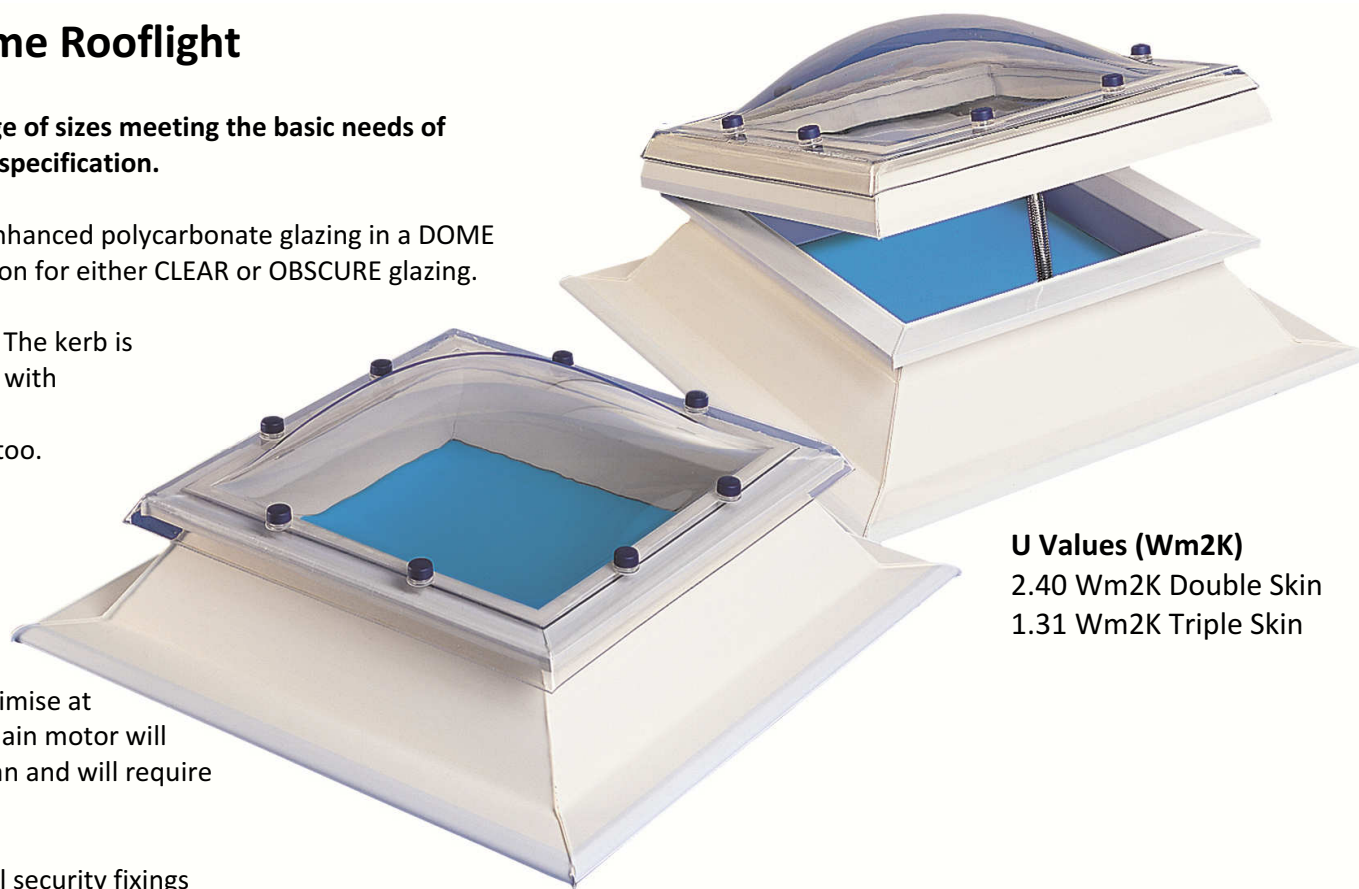
The Outlook range is a high quality product in a limited range of sizes meeting the basic needs of Roofers, Builders & Developers without sacrificing material specification.

The Outlook range features a DOUBLE or TRIPLE skin of UV enhanced polycarbonate glazing in a DOME which is long lasting and highly durable. There is also an option for either CLEAR or OBSCURE glazing.

The package comes complete with a 150mm high uPVC kerb. The kerb is simple to install and is suitable for all traditional roof finishes with no internal decoration required. A 300mm high uPVC kerb is available upon request plus other ventilation options too.

As well as the standard UNVENTED/FIXED option we can offer a pole operated HINGED wormgear (as shown) or an electrical HINGED chain motor which can be provided with the 150mm high kerb. These work on the principle of a hinged lifting frame, with the polycarbonate dome attached, rising away from the kerb, on one side. This opening will maximise at approximately 30 degrees to the horizontal. The electrical chain motor will need to be wired to the power source by a qualified technician and will require an extra on/off switch to operate too.

The rooflights are supplied with Installation details & external security fixings



**U Values (Wm<sup>2</sup>K)**  
2.40 Wm<sup>2</sup>K Double Skin  
1.31 Wm<sup>2</sup>K Triple Skin



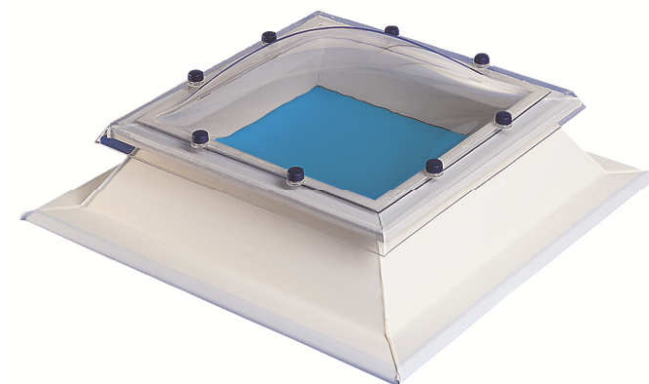
# Outlook Roof Light Size Chart



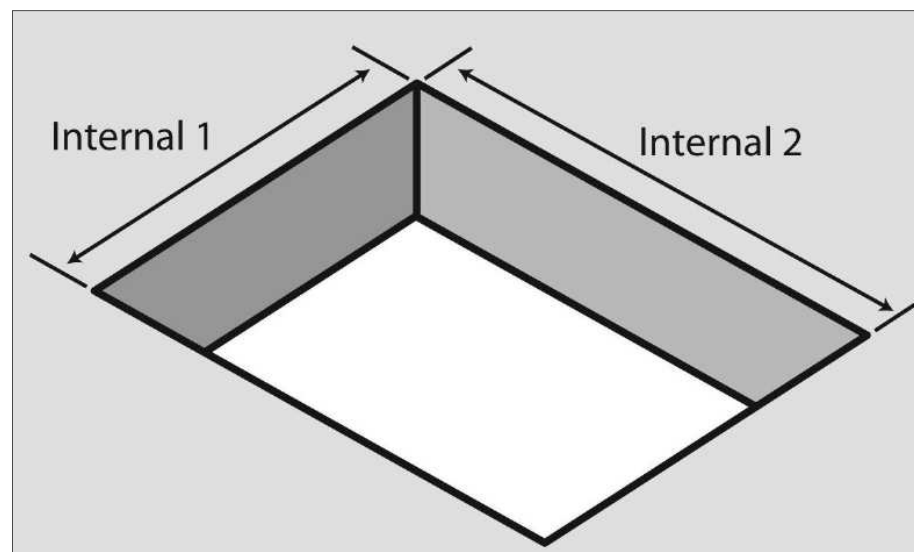
Size (mm)	Product Code	Clear Light Size (mm)	Roof Opening Size (mm) (Internal 1 & 2)
600x600	OSD1	400x400	600x600
750x750	OSD2	550x550	750x750
800x800	OSD2A	600x600	800x800
900x900	OSD3	700x700	900x900
1000x1000	OSD4	800x800	1000x1000
1100x1100	OSD4A	900x900	1100x1100
1200x1200	OSD5	1000x1000	1200x1200
1500x1500	OSD7	1300x1300	1500x1500
1800x1800	OSD8	1600x1600	1800x1800
600x900	ORD1	400x700	600x900
600x1200	ORD2	400x1000	600x1200
750x900	ORD3	550x700	750x900
900x1200	ORD4	700x1000	900x1200
900x1800	ORD5	700x1600	900x1800
1000x1500	ORD6	800x1300	1000x1500
1200x1800	ORD7	1000x1600	1200x1800
1200x2400	ORD8	1000x2200	1200x2400

The Outlook roof light is designed to sit on the a roof deck around the structural opening and offers a 150mm high upstand to allow for most modern waterproof membranes such a single ply, GRP, lead, traditional felt materials, torch on materials & mastic asphalt (although care is required when using hot torches & hot applied materials)

The pre-drilled dome is fitted last using the supplied security fixings & caps.

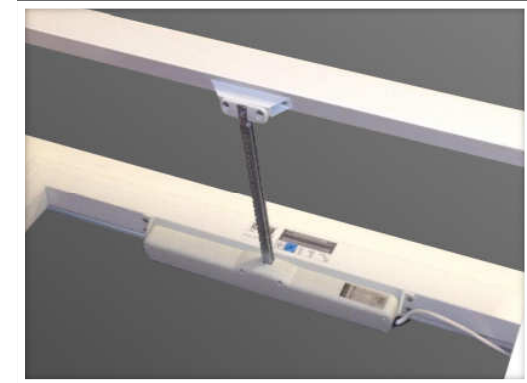
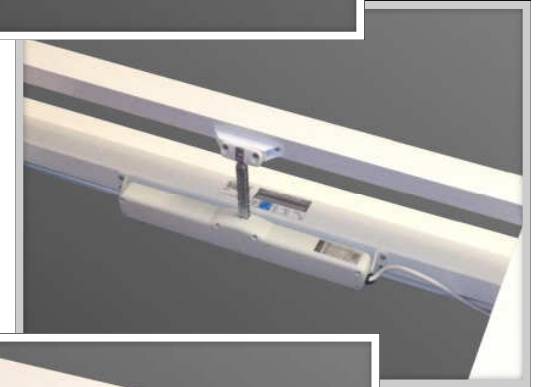


## Structural Roof Opening



## Outlook Roof Light Ventilation options

**MANUAL HINGED** - The Outlook pole operated manual hinged wormgear option offers the opportunity to keep the unit fully closed or open a couple of millimetres or even open to nearly 30 degrees. Units over 1200mm will have a double mechanism and the lifting frame is always hinged on the long side unless specified otherwise.



**ELECTRICAL HINGED** - The Outlook electrical operated hinged option offers a switch operated opening (switch by others) and is also available with a further remote option including rain sensors. Please speak to our office for further advice.

### **Part L Building Regulations**

We are fully committed in supplying rooflights & skylights that conform to the necessary thermal values. Building regulations were redefined by the government in 2002. The new regulation required substantially increased thermal values to help alleviate heat loss and solar gain into a building. These regulations effect all properties including commercial and domestic. The rule of thumb is that if a roof has more than 20% of its area covered with rooflights then the rooflights would need to achieve a 'U' value of at least 2.2W/m<sup>2</sup>k. This decreases with a smaller percentage. For more information contact our office.

### **Fire Regulations**

Polycarbonate materials achieve a class 1 surface spread of flame, BS 476 part 6 and are classed as an AA, BS 476 part 3 rating too. For more information on Fire regulations, contact our office.

### **Maintenance**

The cleaning of rooflights will be required from time to time. Rooflights and skylights can be cleaned using a light household detergent and a non abrasive cloth. Please note that health and safety issues will need to be considered when attempting any maintenance requirements

### **Non fragility & falling bodies**

Most rooflights are classed as **non fragile**. This may not always be the case but you will informed if the product your require isn't non fragile. When working on site, fitting or maintaining rooflights, you should always consider that they are **fragile** and take the appropriate steps to protect the work force. Protection could be in the form of fall arrest gear, crash decks, edge Protection etc. If you are not sure contact your local HSE office for further advice.

### **Polyester Powder Coating**

All metallic products are supplied in a mill finish or to a choice of RAL colours. White is standard.

### **Condensation**

Every effort is taken to alleviate the chances of condensation forming on any product. Extreme weather conditions, however, can have an effect on this, with cold external and warm internal temperature differentials causing condensation to form on surfaces.

### **Handling & Storage**

Care must be taken when handling any product. Polycarbonate, particularly, as it be can scratched. Rooflights are supplied with a protective packaging for this reason. Rooflights should never be stacked and should always be stored in a dry area away from sunlight until there installation.

### **Design & specification**

Full technical drawing facilities are available from our office. Any queries regarding our products should be addressed to our technical team.