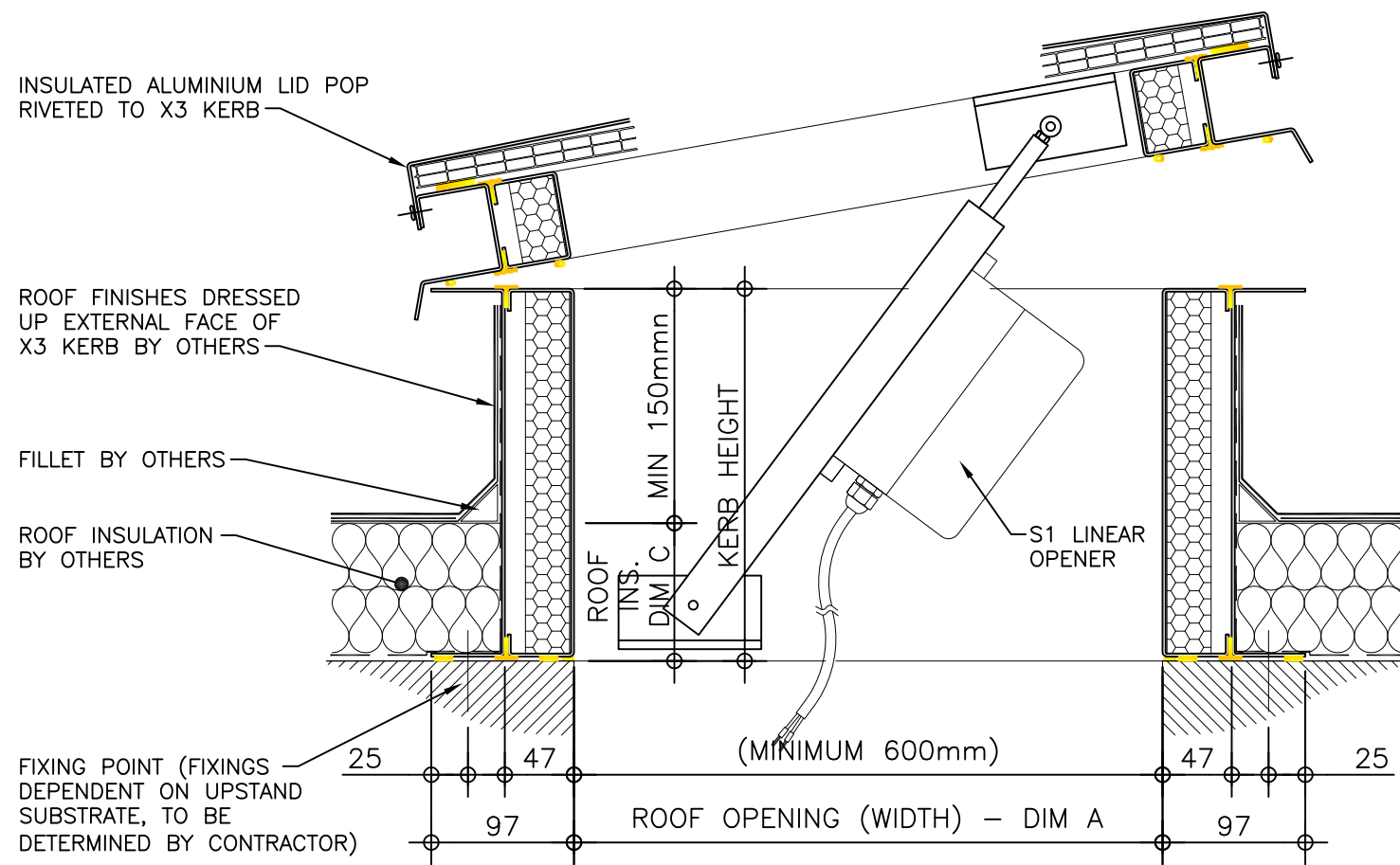
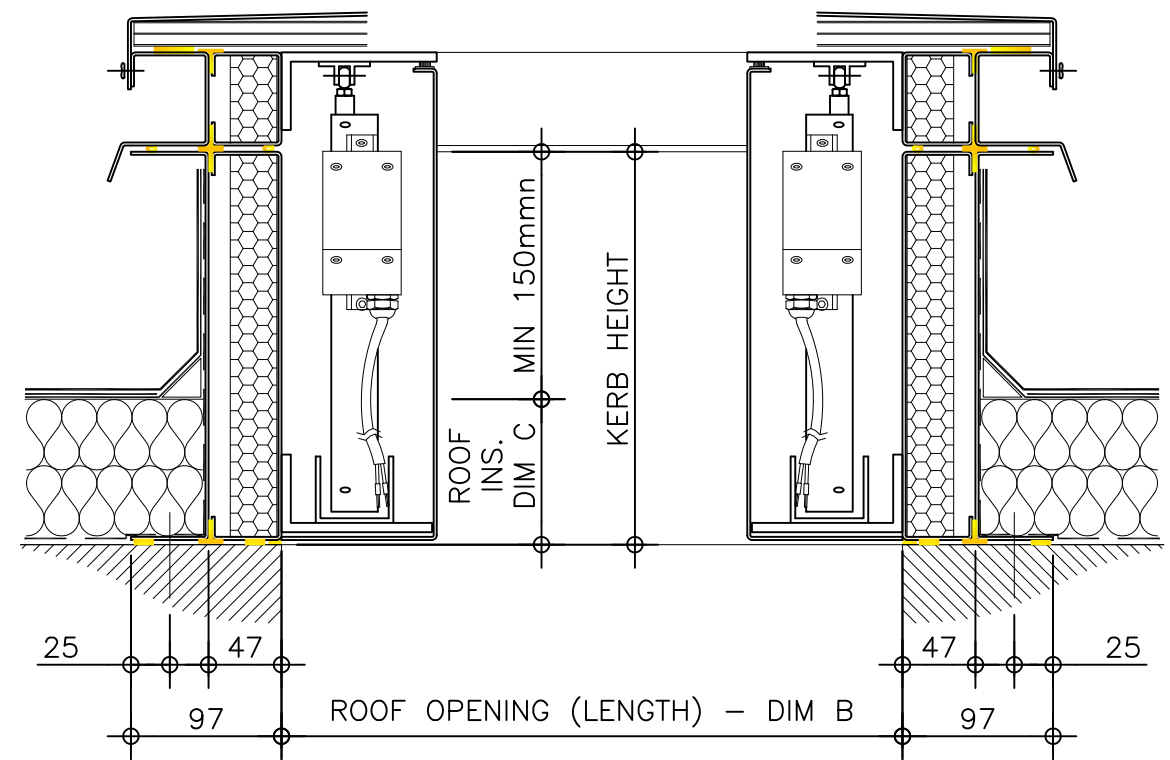


Kerb Specification:
 X3 kerb constructed from 2mm thick Polyester Powder Coated Aluminium
 Colour: White
 RAL: 9910 Gloss

Typical Glazing Specification:
 2mm thick polyester powder coated aluminium with 16mm structured polycarbonate internal liner



SECTION A - A



SECTION B - B

REV:	DATE:	DESCRIPTION:	DRN BY	DESCRIPTION:
0	27.11.13	New modular drawings released	DL	Aluminium smoke vent / automatic opening vent upstand fixed direct to roof, thermally broken, complete with electrically operated (linear motor) lifting frame and insulated solid lid (aluminium).
		DRAWN BY:	CREATION DATE:	CHECKED BY:
		DL	27-Nov-13	DL
		SCALE(S)	REVISION:	
		1:5 @ A3	0	
Rooflights & Glazing UK Ltd..... Tel: 0114 4081000 email: sales@rooflightsandglazing.co.uk				DRG No. XT-X3-C-05-90-S1-ISL