

Typical Glazing Specification:

Outer - 3mm thick clear UV protected polycarbonate

Mid - 2mm thick clear polycarbonate

Inner - 3mm thick clear or diffused polycarbonate (T.B.C.)

X2 ROOFLIGHT SPECIFICATION

(FABRICATED FROM SELF FINISH WHITE EXTRUDED uPVC)

Quantity of Rooflight(s)	1no
Roof Opening - Length (mm)	Dim A
Roof Opening - Width (mm)	Dim B
Overall Structure - Length (mm)	Dim C
Overall Structure - Width (mm)	Dim D
Kerb Ventilation?	x
Opening Frame? (Gas spring operated)	✓

TAMPER RESISTANT FIXINGS,
COMPLETE WITH COVER CAP

X2 KERB SECURED USING
SUITABLE FIXINGS @ 300mm
CENTRES (FIXINGS BY INSTALLER)

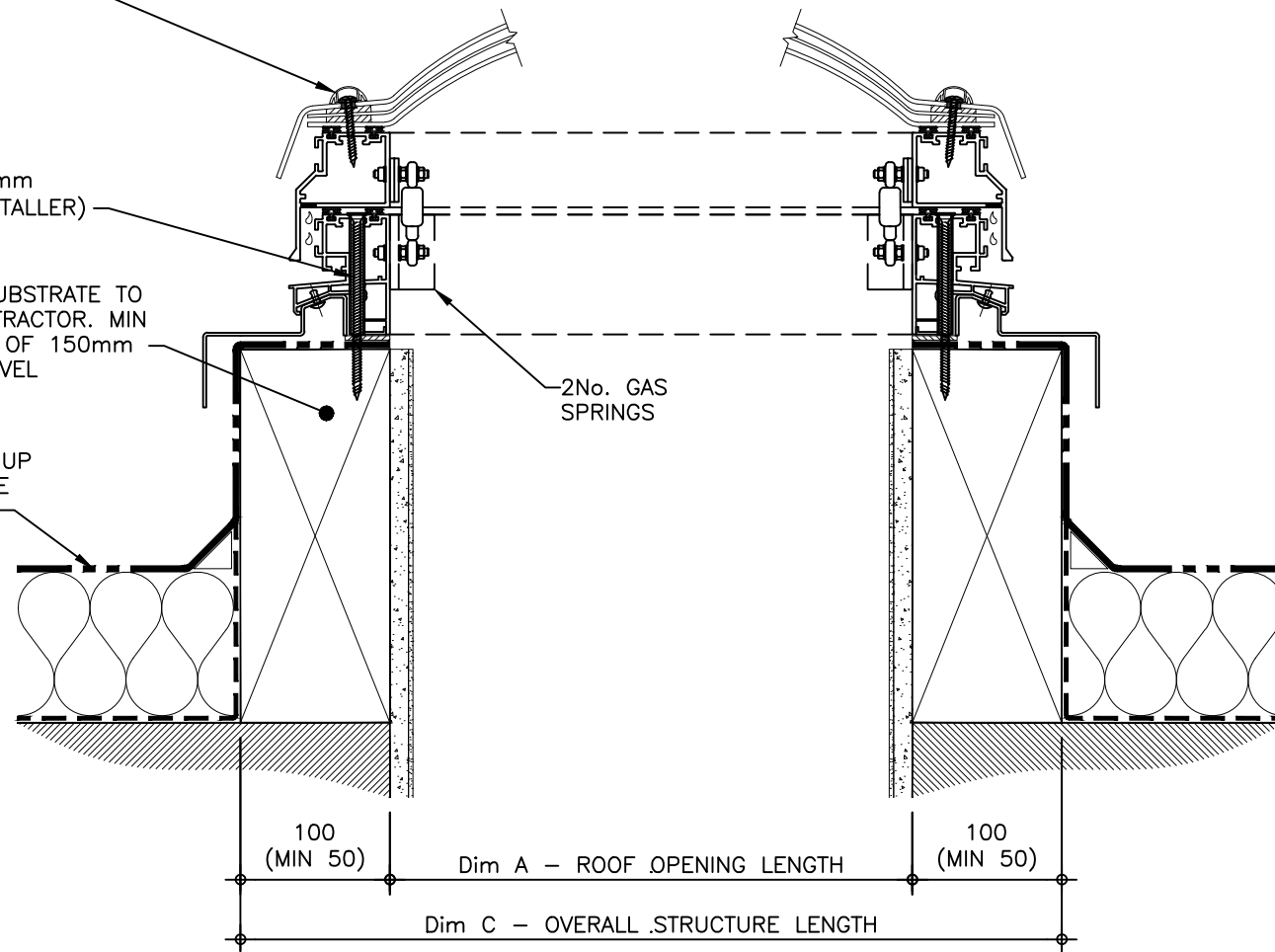
SUITABLE, CONTINUOUS SUBSTRATE TO
FULL PERIMETER BY CONTRACTOR. MIN
50mm WIDE, HEIGHT MIN OF 150mm
ABOVE FINISHED ROOF LEVEL

ROOF FINISHES DRESSED UP
AND OVER EXTERNAL FACE
OF UPSTAND BY ROOFING
CONTRACTOR

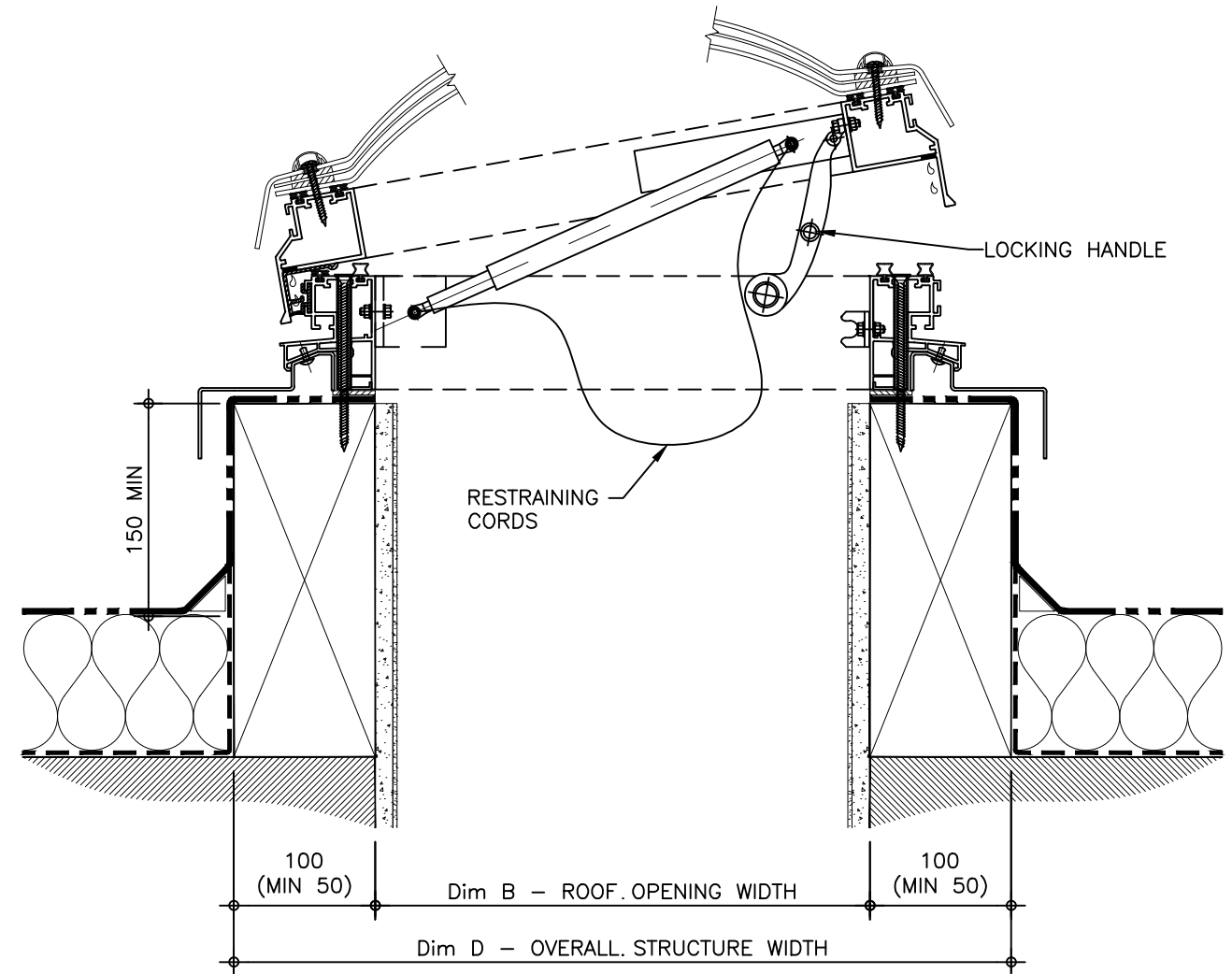
2No. GAS
SPRINGS

LOCKING HANDLE

RESTRAINING
CORDS



SECTION THROUGH LENGTH



SECTION THROUGH WIDTH

REV:	DATE:	DESCRIPTION:	DRN BY	DESCRIPTION:
0	12.09.16	First issue of this drawing	DL	Unventilated vertical uPVC access hatch fixed direct to roof, with gas sprung opening frame (with restraining cords), triple skin polycarbonate dome and tamper resistant fixings.
DRAWN BY:		CREATION DATE:	CHECKED BY:	SCALE(S)
DL		12.09.16	--	1:5 @ A3
REVISION:		0		
<p>Rooflights & Glazing Unit 5, Ironbridge Industrial Estate, 397 Retford Road, Sheffield, S13 9WA T:0114 408 1000 F:0114 238 5511 E:sales@rooflightsandglazing.co.uk W:www.rooflightsandglazing.co.uk</p>				

**ROOFLIGHTS
& GLAZING**

DRG No.
RG-X2-D-04G-SS