

Typical Glazing Specification:
 Outer - 3mm thick clear UV protected polycarbonate
 Mid - 2mm thick clear polycarbonate
 Inner - 2mm thick clear or diffused polycarbonate (T.B.C.)

SF15 ROOFLIGHT SPECIFICATION

(FABRICATED FROM SELF FINISH WHITE EXTRUDED uPVC)

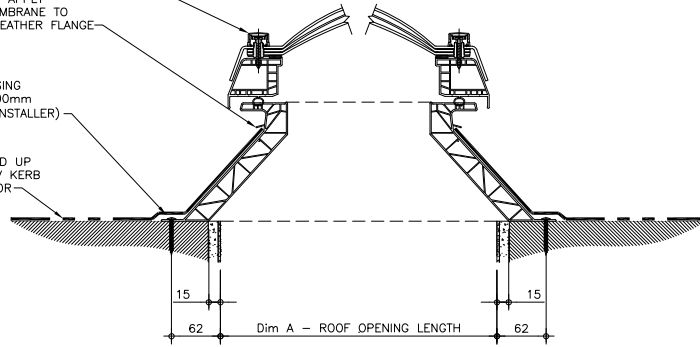
Quantity of Rooflight(s)	1no
Roof Opening - Length (mm)	Dim A
Roof Opening - Width (mm)	Dim B
Kerb Ventilation?	x
Opening Frame? (Electrically operated chain motor)	✓

TAMPER RESISTANT FIXINGS
COMPLETE WITH COVER CAPS

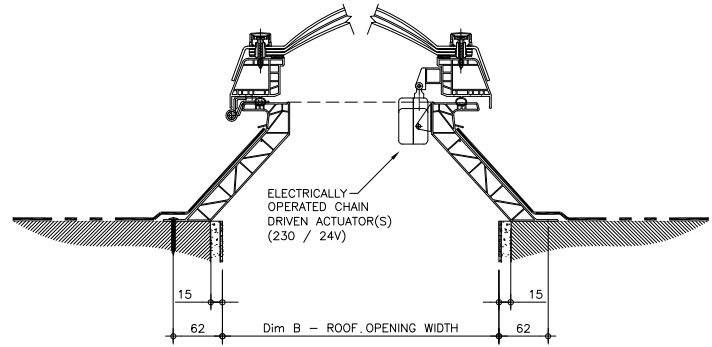
uPVC WEATHER FLANGE; APPLY
WEATHER PROOFING MEMBRANE TO
KERB DRESS BEHIND WEATHER FLANGE

X2V KERB SECURED USING
SUITABLE FIXINGS @ 300mm
CENTRES (FIXINGS BY INSTALLER)

ROOF FINISHES DRESSED UP
EXTERNAL FACE OF X2V KERB
BY ROOFING CONTRACTOR



SECTION THROUGH LENGTH



SECTION THROUGH WIDTH

REV:	DATE:	DESCRIPTION:	DRN BY:	DESCRIPTION:
0	16.10.19	First issue of this drawing	IMW	Unventilated vertical uPVC upstand fixed direct to roof, with electrically operated chain driven lifting frame and triple skin polycarbonate dome with tamper resistant fixings.
DRAWN BY:		CREATION DATE:	CHECKED BY:	SCALE(S)
IMW		16.10.19	SS	1:5 @ A3
REVISION:		0		
Coxdome Unit 1, Prothero Industrial Estate, Bilport Lane, Wednesbury, West Midlands, WS10 0NT Tel: 0121 530 4230 Web: www.coxdome.co.uk				DRG No. CD-SF15-C-06-SS

