

Typical Glazing Specification:
 Outer - 3mm thick clear UV protected polycarbonate
 Mid - 2mm thick clear polycarbonate
 Inner - 2mm thick clear or diffused polycarbonate (T.B.C.)

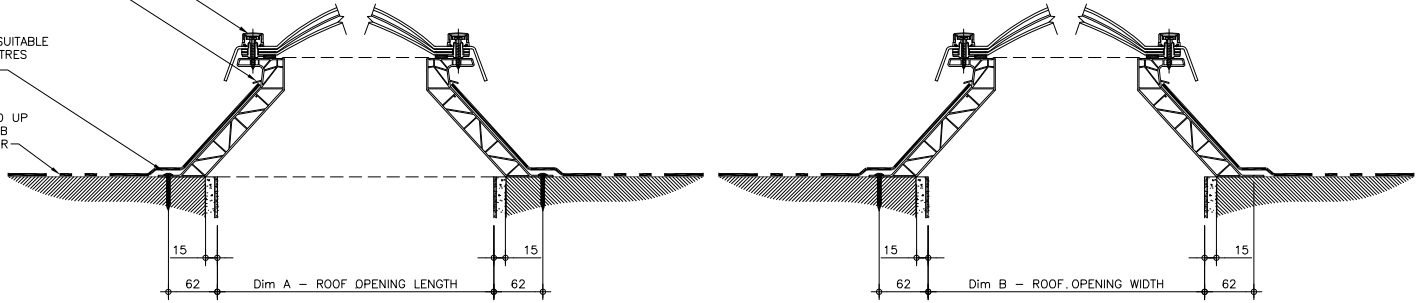
X2V ROOFLIGHT SPECIFICATION (FABRICATED FROM SELF FINISH WHITE EXTRUDED uPVC)	
Quantity of Rooflight(s)	1no
Roof Opening - Length (mm)	Dim A
Roof Opening - Width (mm)	Dim B
Kerb Ventilation?	x
Opening Frame?	x

TAMPER RESISTANT FIXINGS,
COMPLETE WITH COVER CAP

uPVC WEATHER FLANGE; APPLY
WEATHER PROOFING MEMBRANE TO
KERB DRESS BEHIND WEATHER FLANGE

KERB SECURED USING SUITABLE
FIXINGS @ 300mm CENTRES
(FIXINGS BY INSTALLER)

ROOF FINISHES DRESSED UP
EXTERNAL FACE OF KERB
BY ROOFING CONTRACTOR



SECTION THROUGH LENGTH

SECTION THROUGH WIDTH

REV:	DATE:	DESCRIPTION:	DRN BY:	DESCRIPTION:
0	16.10.19	First Issue of this drawing	IMW	Unventilated splayed uPVC upstand fixed direct to roof, with triple skin polycarbonate dome and tamper resistant fixings. CD-SF15-C-00-SS
DRAWN BY:		CREATION DATE:	CHECKED BY:	SCALE(S)
IMW		16.10.19	SS	1:5 @ A3
REVISION:				0
Coxdome Unit 1, Prothero Industrial Estate, Bilport Lane, Wednesbury, West Midlands, WS10 0NT Tel: 0121 530 4230 Web: www.coxdome.co.uk				DRG No. CD-SF15-C-00-SS

