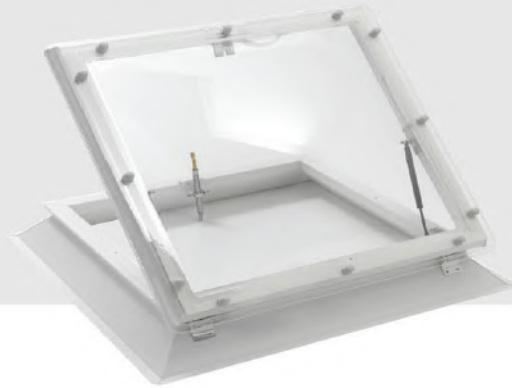


ROOF ACCESS HATCH



Provides safe access for personnel onto the roof for inspection and maintenance

COXDOME ROOF ACCESS

- Stylish appearance inside and out
- Avoids the need for additional access facilities
- Offers means of emergency escape
- Option for manual opening with spindle, to allow controllable ventilation (winding rod required)
- Gas spring operated
- Interior and exterior locking

TECHNICAL SPECIFICATION

- Units hinged along long side
- Opening angle of 85°
- SF15, BF30, BF15 splayed upstands
- EN 1873 soft body article 5.4.3.2 (1200 joules)
- Standard sizes available from 600 x 900mm
- Available with spherical or pyramidal domes
- Clear, diffused, opal or clear glazing options

Rooflight Size	Glazing Options	
	Dome	Pyramid
600 x 900mm	•	
700 x 700mm	•	•
700 x 1000mm	•	
800 x 800mm	•	•
800 x 1300mm	•	•
800 x 1800mm	•	•
900 x 900mm	•	•
900 x 1200mm	•	
1000 x 1000mm	•	•
1000 x 1300mm	•	
1000 x 1600mm	•	
1000 x 2000mm	•	
1200 x 1200mm	•	•

Coxdome Roof Access is also available in solid aluminium, for use on all flat roofs with a maximum inclination of 15°. When installed to manufacturer's instructions, Coxdome will guarantee the product for 10 years.

ALUMINIUM HATCH TECHNICAL SPECIFICATION

- Mill finish aluminium lid with 80mm Rockwool insulation
- Splayed 300mm steel upstand with 60mm Rockwool insulation
- Internal: white RAL 9002 / External: aluminium
- 80° opening angle
- Gas strut assisted opening for smooth, easy single-handed operation
- Supplied with completed upstand for ease of installation
- A range of sizes available



Rooflight Size	Weight (Kgs)
900 x 1100mm	49.3
900 x 1600mm	65.1
1100 x 1100mm	55.1
1100 x 2600mm	107.2
1200 x 1700mm	78.4