

# Technical Data Sheet

V.07-2019

## Hinged Flatglass Rooflights

- ▶ A contemporary, easy-to-use ventilation and daylighting solution for modern buildings

### Key Features & Benefits

- ▶ 15 year warranty\*
- ▶ Wiring and setup details available
- ▶ Fully thermally-broken aluminium glazing frame prevents cold bridging, reducing the risk of condensation
- ▶ Electric; 24v as standard, with 230v option. Manual Hinged with Wormgear Spindle. Manual Access also available
- ▶ Excellent thermal performance, with total system U-values as low as 0.5 W/m<sup>2</sup>.K achievable
- ▶ Quick and easy to install on-site
- ▶ Designed to be installed on pitches from 1°
- ▶ Recommended minimum kerb pitch of 5° to help shed water
- ▶ Minimal framework: daylight is maximised while the visible framework is minimised
- ▶ More daylight = less artificial light = energy savings
- ▶ BIM Objects
- ▶ NBS Specification document
- ▶ Product CAD drawings
- ▶ Install guides
- ▶ More daylight leads to enhanced well-being
- ▶ Wiring and set up details

### Frame Specification

- ▶ The Hinged Flatglass rooflight frame is manufactured from extruded aluminium section to BS 1474, EN 12020-1:2001
  - ▶ Polyamide thermal break to BS EN ISO 16396-2:2017 within the glazing frame makes it fully thermally-broken and extremely thermally-efficient
    - ▶ Polyester Powder Coated Aluminium to BS EN 12206-1:2004
      - ▶ RAL Colour: Anthracite Grey (RAL 7016) frames
      - ▶ White (RAL 9010) and Black (RAL 9005) frames are also available as standard options
        - ▶ Bespoke RAL colour options available on request

### Glass Specification

#### Double Glazed - Standard:

Outer: 4mm or 6mm Clear Heat Soak Tested Toughened glass  
Cavity: 24mm or 20mm Argon filled with Swisspacer warm edge spacer silicone bonded for a UV resistant edge seal  
Inner: 4mm or 6mm Clear Heat Soak Tested Toughened glass with Soft Low-E coating to cavity face

#### Double Glazed (CWCT Class 1 Non-fragile):

Outer: 10 or 12mm Clear Heat Soak Tested Toughened glass  
Cavity: 16mm Argon filled with Swisspacer warm edge spacer silicone bonded for a UV resistant edge seal  
Inner: 13.5mm Laminated glass with SGP interlayer and Soft Low-E coating to cavity face with polished edges

#### Double Glazed (CWCT Class 2 Non-fragile):

Outer: 6mm Clear Heat Soak Tested Toughened glass with Soft Low-E coating to cavity face  
Cavity: 16mm Argon filled with Swisspacer warm edge spacer silicone bonded for a UV resistant edge seal  
Inner: 9.5mm Laminated glass with PVB interlayer and polished edges or 11.5mm Laminated glass with SGP interlayer and polished edges

### Product Testing & Certification

- ▶ Weathertightness: CWCT Class A4 Air leakage, Resistance to Wind Class E2400 Pa and Watertightness Class R7
- ▶ Non-fragility: CWCT TN66/67 and TN92, with Class 1 and Class 2 compliant solutions available
- ▶ AA Fire-rated: AA Designation (National Class) or Broof (T4) European Class and Euro Class A 1 non-combustible

### Critical Kerb External Dimensions (Standard Glass Specification)

Min. Kerb Height: 150mm (at the eaves end)  
Min. Kerb Thickness: 75mm (excluding finishes)  
Max. Size (Square): 1850mm x 1850mm  
Max. Size (Rectangular): Dependent on glass specification  
Min. Size: 600mm x 600mm  
Min. Recommended Pitch: 5° to shed water  
Chain Stroke (Electric Hinged): 300mm  
Stroke (Manual Hinged): 300mm  
Min. Recommended Pitch: 5° to shed water

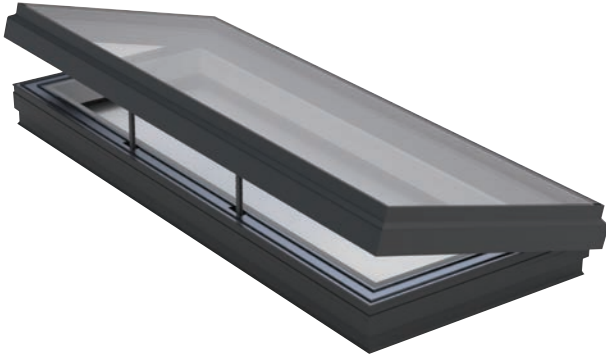
### Bespoke Glass Options

- ▶ Solar Control
- ▶ Privacy Glass
- ▶ Body Tinted
- ▶ Acoustic Laminate
- ▶ Coloured Glass
- ▶ Easy-Clean Coatings (Ritec)
- ▶ CUI in Advanced Thermal Performance
- ▶ Triple Glazed and Laminated Inner pane options
- ▶ Integral Blind
- ▶ Paint or Sandblast border



# Technical Data Sheet

V.07-2019



## British Standards Compliance

BS 6375-1: 2015+A1:2016 Weathertightness  
BS EN 1026:2016 Air Permeability  
BS EN 1027: 2016 Watertightness  
BS EN 12211: 2016 Wind Resistance  
BS EN 12206-1:2004: Polyester Powder Coating

## Rooflight Performance

Building Regulations (E&W)  
Approved Document L compliant design to achieve low U-values  
U-values: As low as 0.6 W/m<sup>2</sup>.K  
G-values: As low as 0.19  
Light Transmission: Up to 79.1%

## Design Loadings

Snow: 640 N/m<sup>2</sup>  
Wind: 750 N/m<sup>2</sup>

## Rooflight Control Options

- ▶ Supplied with a white Transformer Switch as standard (Electric Hinged)
- ▶ Wind and Rain Sensors available (plus remote options)
  - ▶ Multi-zone operation capabilities
  - ▶ Smart Home compatible
  - ▶ Telescopic winding pole up to 3.0m (Manual Hinged)

## Product Variations

- ▶ Electric Hinged
- ▶ Manual Hinged
- ▶ Manual Access

## Rooflight Cleaning & Maintenance

All of our Flatglass rooflights can be supplied with an easyclean coating, the **Ritec ClearShield** system provides an efficient solution to greatly reduce the need for cleaning.

### 'Non-stick', easy-clean rooflight protection provides:

- ▶ Reduced cleaning time, effort and frequency
- ▶ Keeps rooflights looking like new, staying cleaner for significantly longer
- ▶ Resists glass staining and contamination from tree sap, bird droppings, traffic pollution and general dirt
- ▶ Helps to maintain Window Energy Ratings



**Rooflights & Glazing UK Ltd**

Tel: 0114 4081000 Fax: 0114 2385511

Email: [sales@rooflightsandglazing.co.uk](mailto:sales@rooflightsandglazing.co.uk)

Web: [www.rooflightsandglazing.co.uk](http://www.rooflightsandglazing.co.uk)

*Helping daylight do its work!*

