



Technical Data Sheet

V.07-2019

Sliding Flatglass Rooflights

- ▶ A high-end, retractable rooflight that creates bright and airy spaces with daylight, natural ventilation and roof access

Key Features & Benefits

- ▶ 15 year warranty*
- ▶ Daylight, natural ventilation and roof access solution
- ▶ Ideal for rooftop areas where high wind loadings are apparent
- ▶ Operated by fully-concealed 24v electric chain linked actuators
- ▶ Fully thermally-broken aluminium frame prevents cold bridging, reducing the risk of condensation
- ▶ Excellent thermal performance, with total system U-values as low as 0.6 W/m².K achievable
- ▶ Quick and easy to install on-site
- ▶ Designed to be installed on roof pitches from 1 degree
- ▶ Recommended minimum kerb pitch of 5 degrees to help shed water
- ▶ Minimal framework: daylight is maximised while the visible framework is minimised
- ▶ More daylight = less artificial light = energy savings
- ▶ BIM Objects
- ▶ NBS Specification document
- ▶ Product CAD drawings
- ▶ Install guides, set up and wiring instructions
- ▶ More daylight leads to enhanced well-being

Frame Specification

- ▶ The Sliding Flatglass rooflight frame is manufactured from extruded aluminium section to BS 1474, EN 12020-1:2001
 - ▶ Polyester Powder Coated Aluminium to BS EN 12206-1:2004
 - ▶ RAL Colour: Anthracite Grey (RAL 7016) frames
 - ▶ White (RAL 9010) and Black (RAL 9005) frames are also available as standard options
 - ▶ Bespoke RAL colour options available

Glass Specification

Double Glazed - Standard:

Outer: 6mm Clear Heat Soak Tested

Toughened glass

Cavity: 20mm Argon filled with Swisspacer warm edge spacer silicone bonded for a UV resistant edge seal

Inner: 6mm Clear Heat Soak Tested

Toughened glass with Soft Low-E coating to cavity face

Double Glazed - Laminated Inner:

Outer: 6mm Clear Heat Soak Tested Toughened glass with Soft Low-E coating to cavity face

Cavity: 18mm Argon filled with Swisspacer warm edge spacer silicone bonded for a UV resistant edge seal
Inner: 8.8mm Laminated glass with PVB interlayer and polished edges
CWCT Class 1 & 2 non-fragility options available

Product Testing & Certification

- ▶ Weathertightness: CWCT Class A4 Air leakage, Resistance to Wind Class E2400 Pa and Watertightness Class R7
- ▶ Non-fragility: CWCT TN66/67 and TN92, with Class 1 and Class 2 compliant solutions available
- ▶ AA Fire-rated: AA Designation (National Class) or Broof (T4) European Class and Euro Class A1 non-combustible

Critical Kerb External Dimensions (Standard Glass Specification)

Min. Kerb Height: 150mm (at the eaves end)
Min. Kerb Thickness: 75mm (excluding finishes)
Max. Kerb Thickness: Dependent on glass specification
Max. Size: 1200mm x 2000mm
Min. Size: 800mm x 800mm
Min. Recommended Kerb Pitch: 5° to shed water
Chain Stroke: 600mm, 800mm or 1000mm
Max Kerb Pitch: 5°

Bespoke Glass Options

- ▶ Solar Control
- ▶ Privacy Glass
- ▶ Body Tinted
- ▶ Acoustic Laminate
- ▶ Coloured Glass
- ▶ Easy-Clean Coatings (Ritec)
- ▶ CUin Advanced Thermal Performance
- ▶ Laminated Inner pane options

British Standards Compliance

BS 6375-1: 2015+A1:2016 Weathertightness
BS EN 1026:2016 Air Permeability
BS EN 1027: 2016 Watertightness
BS EN 12211: 2016 Wind Resistance
BS EN 12206-1:2004: Polyester Powder Coating

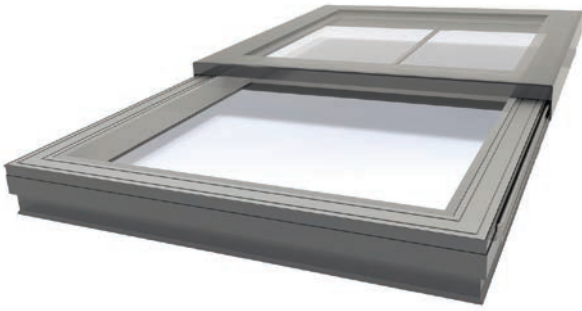
Rooflight Control Options

- ▶ White transformer switch as standard
- ▶ Remote control included
- ▶ Rain sensor option available



Technical Data Sheet

V.07-2019



Rooflight Performance

Building Regulations (E&W)

Approved Document L compliant design to achieve low U-values

U-values: As low as 0.6 W/m².K

G-values: As low as 0.19

Light Transmission: Up to 79.1%

Design Loadings

Snow: 640 N/m²

Wind: 750 N/m²

Product Weight: From 51 kg/m²

Product Variations

- ▶ Frame designed for use under 1500mm long
- ▶ Frame designed for use over 1500mm long
- ▶ Electric operation
- ▶ Manual operation

Rooflight Cleaning & Maintenance

All of our Flatglass rooflights can be supplied with an easyclean coating, the **Ritec ClearShield** system provides an efficient solution to greatly reduce the need for cleaning.

'Non-stick', easy-clean rooflight protection provides:

- ▶ Reduced cleaning time, effort and frequency
- ▶ Keeps rooflights looking like new, staying cleaner for significantly longer
 - ▶ Resists glass staining and contamination from tree sap, bird droppings, traffic pollution and general dirt
 - ▶ Helps to maintain Window Energy Ratings



Rooflights & Glazing UK Ltd

Tel: 0114 4081000 Fax: 0114 2385511

Email: sales@rooflightsandglazing.co.uk

Web: www.rooflightsandglazing.co.uk

Helping daylight do its work!

